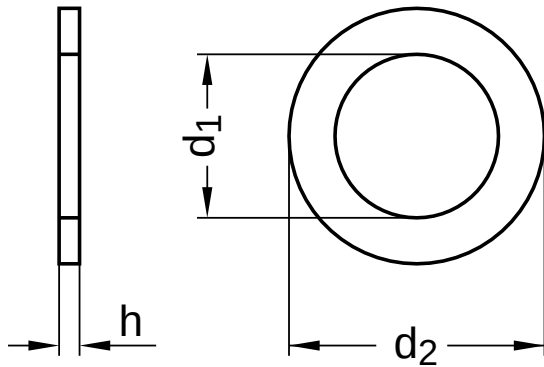
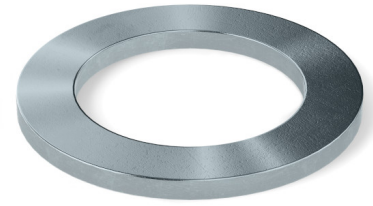


**DIN 988**  
**Shim rings**

Spring steel | zinc-plated, thick-film passivated (VZD) | Cr(VI)-free



| Diameter<br>(d) | nominal size | d <sub>1</sub> |       | nominal size | d <sub>2</sub> |       | h    |      |
|-----------------|--------------|----------------|-------|--------------|----------------|-------|------|------|
|                 |              | min.           | max.  |              | min.           | max.  | min. | max. |
| 25              | 25           | 25.06          | 25.28 | 36           | 35.67          | 35.92 | 1.95 | 2.0  |
| 26              | 26           | 26.06          | 26.28 | 37           | 36.67          | 36.92 | 1.95 | 2.0  |
| 30              | 30           | 30.06          | 30.28 | 42           | 41.67          | 41.92 | 2.45 | 2.5  |
| 32              | 32           | 32.08          | 32.33 | 45           | 44.67          | 44.92 | 2.45 | 2.5  |
| 35              | 35           | 35.08          | 35.33 | 45           | 44.67          | 44.92 | 2.45 | 2.5  |
| 40              | 40           | 40.08          | 40.33 | 50           | 49.67          | 49.92 | 2.45 | 2.5  |

All technical data refer to the measure mm

