

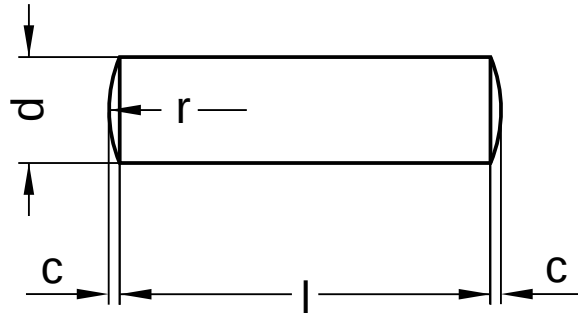
**DIN 7** ähnlich ISO 2338

# Zylinderstifte

mit Linsenkuppe | Toleranzfeld m6

Edelstahl 1.4305 | Cr(VI) - frei

Hinweis: DIN-Norm wurde zurückgezogen



Durchmesser (d)	c max.	r
1	0,15	1,0
1,5	0,23	1,6
2	0,30	2,0
2,5	0,40	2,5
3	0,45	3,0
4	0,60	4,0
5	0,75	5,0
6	0,90	6,0
8	1,20	8,0
10	1,50	10,0
12	1,80	12,0
14	2,00	16,0
16	2,50	16,0
20	3,00	20,0

Länge (l) Nennmaß
3
4
5
6
8
10
12
14
16
18

Länge (l) Nennmaß
20
24
28
30
32
36
40
45
50
55

Länge (l) Nennmaß
60
70
80
90
100

Alle technischen Daten beziehen sich auf das Maß mm



**DIN 7** ähnlich ISO 2338

# Zylinderstifte

mit Linsenkuppe | Toleranzfeld m6

Edelstahl 1.4305 | Cr(VI) - frei

Durchmesser (d)	Länge (l)																										
	3	4	5	6	8	10	12	14	16	18	20	24	28	30	32	36	40	45	50	55	60	70	80	90	100		
1	●	●	●	●	●	●	●																				
1,5	●	●	●	●	●	●	●	●	●																		
2		●	●	●	●	●	●	●	●	●	●																
2,5			●	●	●	●	●	●	●	●	●	●	●														
3			●	●	●	●	●	●	●	●	●	●	●	●	●												
4				●	●	●	●	●	●	●	●	●	●	●	●	●	●	●									
5					●	●	●	●	●	●	●	●	●	●	●	●	●	●	●	●	●						
6						●	●	●	●	●	●	●	●	●	●	●	●	●	●	●	●	●	●				
8							●	●	●	●	●	●	●	●	●	●	●	●	●	●	●	●	●	●	●	●	●
10								●	●	●	●	●	●	●	●	●	●	●	●	●	●	●	●	●	●	●	●
12									●	●	●	●	●	●	●	●	●	●	●	●	●	●	●	●	●	●	●
14										●	●	●	●	●	●	●	●	●	●	●	●	●	●	●	●	●	●
16											●	●	●	●	●	●	●	●	●	●	●	●	●	●	●	●	●
20												●	●	●	●	●	●	●	●	●	●	●	●	●	●	●	●

• Kombinationen im eShop erhältlich | Weitere Größen auf Anfrage

Alle technischen Daten beziehen sich auf das Maß mm

