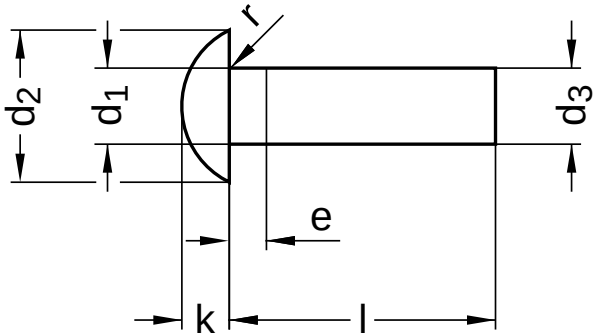


**DIN 660**  
**Round head rivets**

Stainless steel A2 | Cr(VI)-free



Diameter (d)	nominal size	d <sub>1</sub>		d <sub>2</sub> nominal size	d <sub>3</sub> min.	e max.	k nominal size	r max.
		min.	max.					
2	2	1.90	2.10	3.5	1.87	1.0	1.2	0.2
3	3	2.90	3.10	5.2	2.87	1.5	1.8	0.2
4	4	3.90	4.10	7	3.87	2.0	2.4	0.3
5	5	4.85	5.15	8.8	4.82	2.5	3.0	0.4
6	6	5.85	6.15	10.5	5.82	3.0	3.6	0.4

nominal size	Length (l)	
	min.	max.
6	5.70	6.30
8	7.64	8.36
10	9.64	10.36
12	11.57	12.43
15	14.57	15.43
16	15.57	16.43
18	17.57	18.43
20	19.48	20.52

nominal size	Length (l)	
	min.	max.
25	24.48	25.52
30	29.48	30.52
35	34.38	35.62
40	39.38	40.62
45	44.38	45.62
50	49.38	50.62

All technical data refer to the measure mm

