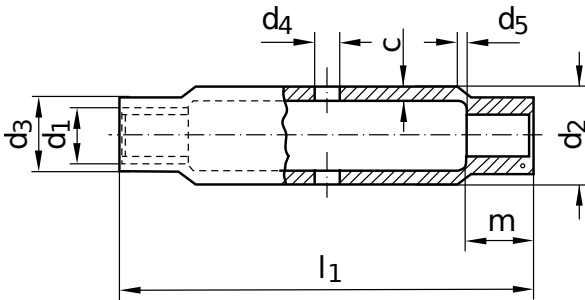


DIN 1478
Turnbuckle sleeves

Made from steel tube

Steel | zinc-plated | Cr(VI)-free | Metric thread

Further information: DIN 1478 turnbuckle nuts are to be assembled with DIN 34828 welding ends made of the same material.



Diameter (d)	c		d ₁		d ₂		d ₃	d ₄	d ₅	l ₁	m	Length (l)	
	nominal size	min.	max.	nominal size	nominal size	min.						max.	min.
M 6	2.9	2.61	3.34	M 6	17.2	16.70	17.70	9.0	6	4.86	110	7.5	110
M 8	3.6	3.24	4.14	M 8	17.2	16.70	17.70	12.0	8	6.57	110	10.0	110
M 10	4.0	3.60	4.60	M 10	21.3	20.80	21.80	15.0	8	8.28	125	12.0	125
M 12	4.0	3.60	4.60	M 12	25	24.50	25.50	18.0	10	9.99	125	15.0	125
M 16	4.5	4.05	5.18	M 16	30	29.50	30.50	22.5	10	13.69	170	20.0	170
M 20	5.0	4.50	5.75	M 20	33.7	33.20	34.20	27.0	12	17.15	200	24.0	200
M 24	5.6	5.04	6.30	M 24	42.4	41.90	42.90	32.0	12	20.59	255	29.0	255
M 30	6.3	5.67	7.09	M 30	51	50.49	51.51	38.0	16	25.99	255	36.0	255
M 36	8.0	7.20	9.00	M 36	63.5	62.86	64.14	47.5	16	31.41	295	43.0	295

All technical data refer to the measure mm

