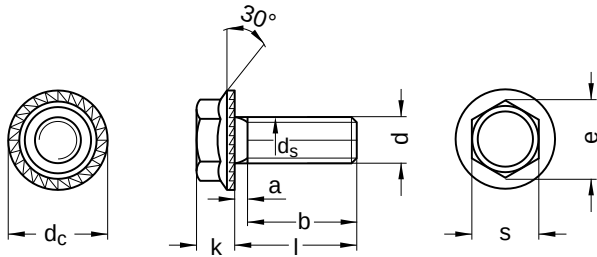


**B 151**  
**ZAHN self-locking screws**

Hexagon head with flange and tothing

Steel | bright | Cr(VI)-free | Metric thread

Further information: Property class 90, from M12 Property class 100



Diameter (d)	a max.	b		d <sub>a</sub> max.	d <sub>c</sub>		d <sub>s</sub>		h <sub>1</sub> nominal size
		l up to 125	l up to 200		min.	max.	min.	max.	
M 5	1.6	16	22	5.7	10.8	11.2	4.82	5	0.20
M 6	2.0	18	24	6.8	13.7	14.2	5.82	6	0.25
M 8	2.5	22	28	9.2	17.7	18.2	7.78	8	0.30
M 10	3.0	26	32	11.2	20.4	21.0	9.78	10	0.33
M 12	3.5	30	36	13.7	23.3	24.0	11.73	12	0.33
M 16	4.0	38	44	17.7	30.2	31.0	15.73	16	0.40

Diameter (d)	h <sub>2</sub> min.	k		e min.	r		s		Tool size
		min.	max.		min.	max.	min.	max.	
M 5	0.17	4.0	4.3	8.87	0.20	0.35	7.78	8	SW 8
M 6	0.20	5.1	5.5	11.05	0.25	0.40	9.78	10	SW 10
M 8	0.25	6.6	7.0	14.38	0.40	0.60	12.73	13	SW 13
M 10	0.30	7.4	7.9	16.64	0.40	0.60	14.73	15	SW 15
M 12	0.30	8.2	8.7	18.90	0.60	0.85	16.73	17	SW 17
M 16	0.33	10.7	11.2	24.49	0.60	0.85	21.67	22	SW 22

nominal size	Length (l)	
	min.	max.
8	7.71	8.29
10	9.71	10.29
12	11.65	12.35
14	13.65	14.35
16	15.65	16.35
18	17.65	18.35
20	19.58	20.42
22	21.59	22.42
25	24.58	25.42
30	29.58	30.42

nominal size	Length (l)	
	min.	max.
35	34.50	35.50
40	39.50	40.50
45	44.50	45.50
50	49.50	50.50
55	54.40	55.60
60	59.40	60.60
70	69.40	70.60

All technical data refer to the measure mm



**B 151**  
**ZAHN self-locking screws**

Hexagon head with flange and tothing

Steel | bright | Cr(VI)-free | Metric thread

Diameter (d)	Length (l)																
	8	10	12	14	16	18	20	22	25	30	35	40	45	50	55	60	70
M 5	●	●	●	●			●										
M 6		●	●	●	●	●	●		●	●							
M 8			●	●	●	●	●	●	●	●	●	●					
M 10					●	●	●	●	●	●	●	●					
M 12							●		●	●	●	●	●	●			
M 16									●	●	●	●	●	●	●	●	●

• Combinations available in the eShop | Other sizes on request

All technical data refer to the measure mm

