

RIVKLE® Hydraulic/pneumatic setting tool

RIVKLE® P3007 PN pneumatic/hydraulic setting tool

Strong and robust tool with amplified stroke for RIVKLE® PN blind rivet nuts.

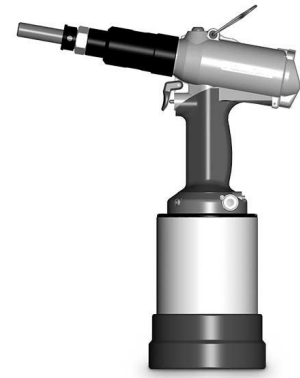
This force-controlled setting tool is used to set RIVKLE® PN blind rivet nuts made of steel (M8/M10).

Delivery scope:

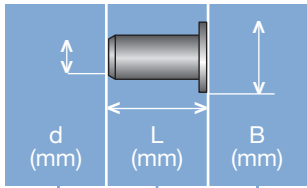
- Basic tool with amplified stroke
- Operating instructions
- Practical case for storage and transport

Threaded mandrels and anvils are not included in the delivery scope and must be ordered separately.

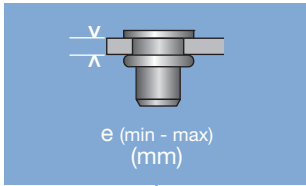
Technical information can be found on the last page.



Diameter (d)	Article number	Weight g
M 8 - M 10	23616001000	3100

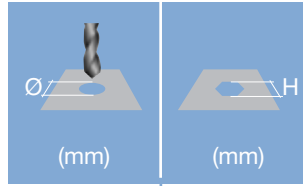


Head diameter
Overall length
Thread size



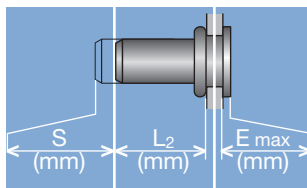
Grip range

Defines the range of total thickness of the customers part (even if it consists of more than one layer)



Hole geometry

If round → diameter
 If hexagonal → wigth across flats



Head projection after setting

Variable according to the application (setting load, material substrate, etc.)

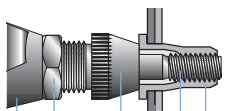
Blind side projection after installation

Defines the clearance needed on the blind side (cannot be used for quality control)

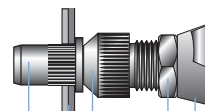
Setting stroke

Difference of total length before and after installation

RIVKLE® Nut



RIVKLE® Stud



- RIVKLE®
- Mandrel*
- Customers part
- Anvil*
- Counter nut
- Setting tool

in accordance to chosen RIVKLE®

All technical data refer to the measure mm

