

RIVKLE® Parallel arm support

Parallel system for RIVKLE® setting tools P2005/P1007/P2007/P2007 PN.

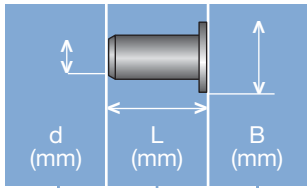
Technical information can be found on the last page.



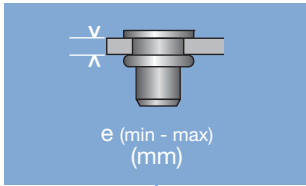
| Article number | Load capacity | For tool type |
|----------------|---------------|-----------------|
| 28259010665 | 2.2 - 4 kg | P3007, P3007 PN |

All technical data refer to the measure mm

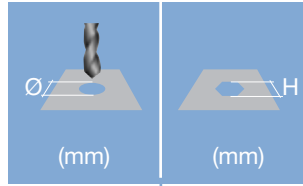




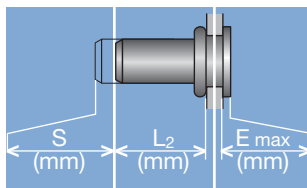
Head diameter
Overall length
Thread size



Grip range
 Defines the range of total thickness of the customers part (even if it consists of more than one layer)



Hole geometry
 If round → diameter
 If hexagonal → wigth across flats

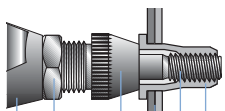


Head projection after setting
 Variable according to the application (setting load, material substrate, etc.)

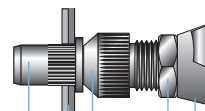
Blind side projection after installation
 Defines the clearance needed on the blind side (cannot be used for quality control)

Setting stroke
 Difference of total length before and after installation

RIVKLE® Nut



RIVKLE® Stud



- RIVKLE®
- Mandrel*
- Customers part
- Anvil*
- Counter nut
- Setting tool

in accordance to chosen RIVKLE®

All technical data refer to the measure mm

