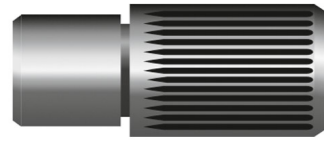


RIVKLE[®] Matrix

Spare die for the RIVKLE[®] OPTEX hexagon punching and installation tool.

Technical information can be found on the last page.



Diameter (d)	Article number	For tool type
M 5	23511005031	OPTEX
M 6	23511006031	OPTEX
M 8	23511008031	OPTEX



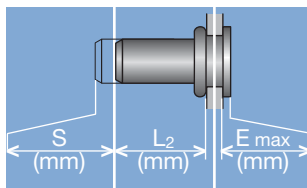
Head diameter
Overall length
Thread size



Grip range
Defines the range of total thickness of the customers part (even if it consists of more than one layer)



Hole geometry
If round → diameter
If hexagonal → width across flats

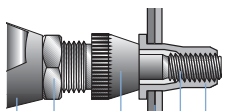


Head projection after setting
Variable according to the application (setting load, material substrate, etc.)

Blind side projection after installation
Defines the clearance needed on the blind side (cannot be used for quality control)

Setting stroke
Difference of total length before and after installation

RIVKLE® Nut



RIVKLE® Stud



RIVKLE®
Mandrel*
Customers part
Anvil*
Counter nut
Setting tool

in accordance to chosen RIVKLE®

All technical data refer to the measure mm

