

RIVKLE® Mandrel

Spare threaded mandrel for the RIVKLE® P3007 pneumatic/hydraulic setting tool to process RIVKLE® Standard blind rivet nuts.

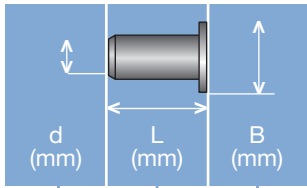
- Threaded mandrel, for series production
- Hardened metal alloy
- Thread as per ISO 6H (ISO 68-1)

Technical information can be found on the last page.

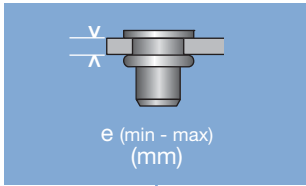
Diameter (d)	Article number	For tool type
M 8	23615908020	P3007
M 10	23615910020	P3007
M 12	23615912020	P3007
M 14	23615914020	P3007
M 16	23615916020	P3007

All technical data refer to the measure mm

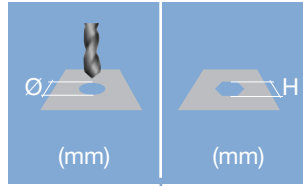




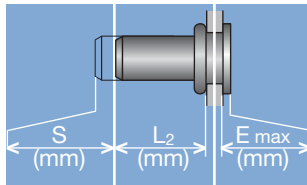
Head diameter
Overall length
Thread size



Grip range
 Defines the range of total thickness of the customers part (even if it consists of more than one layer)



Hole geometry
 If round → diameter
 If hexagonal → wigth across flats

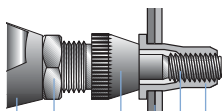


Head projection after setting
 Variable according to the application (setting load, material substrate, etc.)

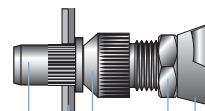
Blind side projection after installation
 Defines the clearance needed on the blind side (cannot be used for quality control)

Setting stroke
 Difference of total length before and after installation

RIVKLE® Nut



RIVKLE® Stud



- RIVKLE®
- Mandrel*
- Customers part
- Anvil*
- Counter nut
- Setting tool

in accordance to chosen RIVKLE®

All technical data refer to the measure mm

