

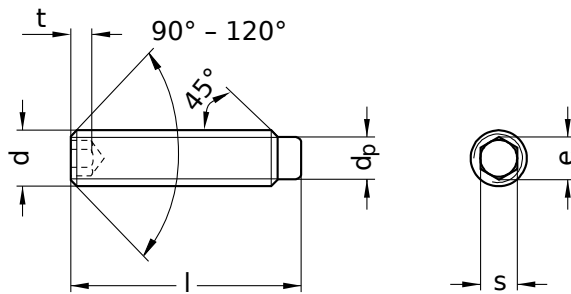
ISO 4028 identical with DIN 915

Set screws

Hexagon socket | with dog point

Steel 45 H | zinc-plated | Cr(VI)-free | Metric thread

Further information: ISO-standard has been withdrawn | Threaded pins are not intended for use under tensile load



Diameter (d)	d _p		e min.	s		Pitch (P)	t min.	Tool size	
	min.	max.		nominal size	min.				max.
M2.5	1.25	1.5	1.45	1.3	1.28	1.30	0.45	2.0	SW 1,3
M3	1.75	2.0	1.73	1.5	1.52	1.58	0.50	2.0	SW 1,5
M4	2.25	2.5	2.30	2.0	2.02	2.08	0.70	2.5	SW 2
M5	3.20	3.5	2.87	2.5	2.52	2.58	0.80	3.0	SW 2,5
M6	3.70	4.0	3.44	3.0	3.02	3.08	1.00	3.5	SW 3
M8	5.20	5.5	4.58	4.0	4.02	4.10	1.25	5.0	SW 4
M10	6.64	7.0	5.72	5.0	5.02	5.14	1.50	6.0	SW 5
M12	8.14	8.5	6.86	6.0	6.02	6.14	1.75	8.0	SW 6
M16	11.57	12.0	9.15	8.0	8.02	8.18	2.00	10.0	SW 8
M24	17.57	18.0	13.72	12.0	12.03	12.21	3.00	15.0	SW 12

nominal size	Length (l)	
	min.	max.
4	3.76	4.24
5	4.76	5.24
6	5.76	6.24
8	7.71	8.29
10	9.71	10.29
12	11.65	12.35
14	13.65	14.35
16	15.65	16.35

nominal size	Length (l)	
	min.	max.
20	19.58	20.42
25	24.58	25.42
30	29.58	30.42
35	34.50	35.50
40	39.50	40.50
45	44.50	45.50
50	49.50	50.50
55	54.40	55.60

nominal size	Length (l)	
	min.	max.
60	59.40	60.60
70	69.40	70.60
80	79.40	80.60
90	89.30	90.70
100	99.30	100.70

All technical data refer to the measure mm



ISO 4028 identical with DIN 915

Set screws

Hexagon socket | with dog point

Steel 45 H | zinc-plated | Cr(VI)-free | Metric thread

Diameter (d)	Length (l)																					
	4	5	6	8	10	12	14	16	20	25	30	35	40	45	50	55	60	70	80	90	100	
M2.5	●																					
M3	●	●	●	●	●	●																
M4		●	●	●	●	●		●	●													
M5		●	●	●	●	●		●	●	●	●											
M6			●	●	●	●		●	●	●	●											
M8					●	●	●	●	●	●	●	●	●									
M10								●	●	●	●	●	●	●	●							
M12										●	●	●	●	●	●	●	●	●	●	●	●	●
M16											●	●	●	●	●	●	●	●	●	●	●	●
M24											●											●

• Combinations available in the eShop | Other sizes on request

All technical data refer to the measure mm

