

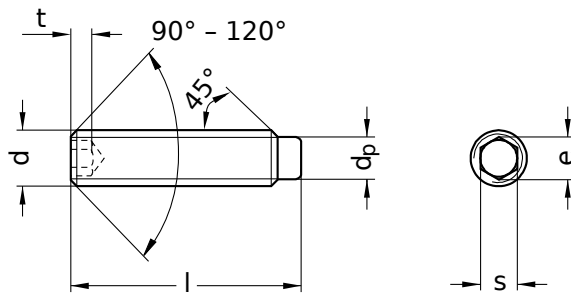
ISO 4028 identical with DIN 915

Set screws

Hexagon socket | with dog point

Steel 45 H | bright | Cr(VI)-free | Metric thread

Further information: ISO-standard has been withdrawn | Threaded pins are not intended for use under tensile load



Diameter (d)	d _p		e min.	s		Pitch (P)	t min.	Tool size
	min.	max.		nominal size	min.			
M3	1.75	2.0	1.73	1.5	1.52	1.58	2.0	SW 1,5
M4	2.25	2.5	2.30	2.0	2.02	2.08	2.5	SW 2
M5	3.20	3.5	2.87	2.5	2.52	2.58	3.0	SW 2,5
M6	3.70	4.0	3.44	3.0	3.02	3.08	3.5	SW 3
M8	5.20	5.5	4.58	4.0	4.02	4.10	5.0	SW 4
M10	6.64	7.0	5.72	5.0	5.02	5.14	6.0	SW 5
M12	8.14	8.5	6.86	6.0	6.02	6.14	8.0	SW 6
M16	11.57	12.0	9.15	8.0	8.02	8.18	10.0	SW 8
M20	14.57	15.0	11.43	10.0	10.02	10.18	12.0	SW 10
M24	17.57	18.0	13.72	12.0	12.03	12.21	15.0	SW 12

nominal size	Length (l)	
	min.	max.
3	2.80	3.20
4	3.76	4.24
5	4.76	5.24
6	5.76	6.24
8	7.71	8.29
10	9.71	10.29
12	11.65	12.35
14	13.65	14.35
16	15.65	16.35
18	17.65	18.35
20	19.58	20.42
25	24.58	25.42

nominal size	Length (l)	
	min.	max.
30	29.58	30.42
35	34.50	35.50
40	39.50	40.50
45	44.50	45.50
50	49.50	50.50
55	54.40	55.60
60	59.40	60.60
70	69.40	70.60
80	79.40	80.60

All technical data refer to the measure mm



ISO 4028 identical with DIN 915

Set screws

Hexagon socket | with dog point

Steel 45 H | bright | Cr(VI)-free | Metric thread

Diameter (d)	Length (l)																				
	3	4	5	6	8	10	12	14	16	18	20	25	30	35	40	45	50	55	60	70	80
M3	●	●	●	●	●	●	●		●	●											
M4		●	●	●	●	●	●		●	●	●										
M5			●	●	●	●	●		●	●	●	●									
M6				●	●	●	●		●	●	●	●	●	●							
M8					●	●	●		●	●	●	●	●	●	●						
M10						●	●		●	●	●	●	●	●	●	●	●			●	●
M12							●	●		●	●	●	●	●	●	●	●	●	●	●	●
M16								●	●	●	●	●	●	●	●	●	●	●	●	●	●
M20											●	●	●	●	●	●	●	●	●	●	●
M24												●	●	●	●	●	●		●		

• Combinations available in the eShop | Other sizes on request

All technical data refer to the measure mm

