

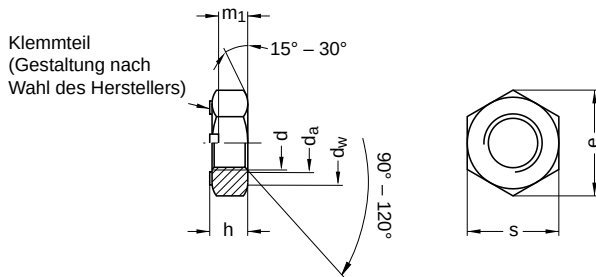
DIN 980 similar to ISO 7042

Hexagon nuts

With clamping part | all metal | form V: one-piece

Steel 10 | zinc-plated | Cr(VI)-free | Metric thread

Further information: DIN standard has been withdrawn | modified nut height and wrench width



Diameter (d)	da		dw	h		m ₁	e	s		Pitch (P)	Tool size
	min.	max.		min.	max.			min.	max.		
M5	5	5.75	6.9	4.8	5.1	2.75	8.79	7.78	8	0.80	SW 8
M6	6	6.75	8.9	5.7	6.0	3.30	11.05	9.78	10	1.00	SW 10
M8	8	8.75	11.6	7.5	8.0	4.40	14.38	12.73	13	1.25	SW 13
M10	10	10.80	15.6	9.0	10.0	5.50	18.90	16.73	17	1.50	SW 17
M12	12	13.00	17.4	11.0	12.0	6.60	21.10	18.67	19	1.75	SW 19
M14	14	15.10	20.5	12.0	14.0	7.70	24.49	21.67	22	2.00	SW 22
M16	16	17.30	22.5	14.0	16.0	8.80	26.75	23.67	24	2.00	SW 24
M18	18	19.50	24.9	16.0	18.0	9.90	29.56	26.16	27	2.50	SW 27
M20	20	21.60	27.7	18.0	20.0	11.00	32.95	29.16	30	2.50	SW 30
M22	22	23.70	29.5	20.0	22.0	12.10	35.03	31.00	32	2.50	SW 32
M24	24	25.90	33.2	22.0	24.0	13.20	39.55	35.00	36	3.00	SW 36

All technical data refer to the measure mm

