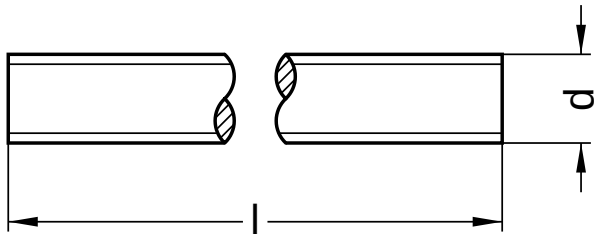
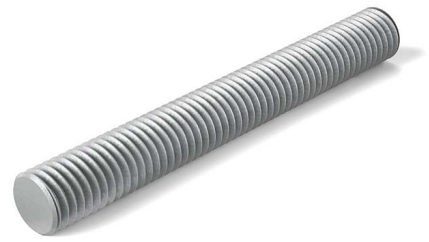


**DIN 976 A**

**Threaded rods**

Form A: thread end without tip | length: 1 m

Steel 8.8 | hot-dip galvanised | Cr(VI)-free | Metric thread



Diameter (d)	Pitch (P)	Length (l)		
		nominal size	min.	max.
M10	1.50	1,000	995.5	1,004.5
M12	1.75	1,000	995.5	1,004.5
M16	2.00	1,000	995.5	1,004.5
M20	2.50	1,000	995.5	1,004.5
M24	3.00	1,000	995.5	1,004.5
M27	3.00	1,000	995.5	1,004.5
M30	3.50	1,000	995.5	1,004.5
M36	4.00	1,000	995.5	1,004.5

All technical data refer to the measure mm

