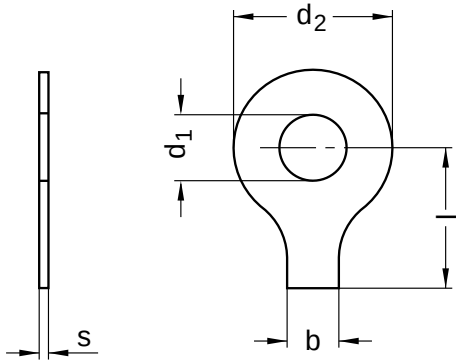


DIN 93
Washers

With long tab

Steel | zinc-plated | Cr(VI)-free

Further information: Norm has been withdrawn without replacement



Diameter (d)	b nominal size	d ₁ nominal size	d ₂ nominal size	r nominal size	s nominal size	Length (l) nominal size
3.2	4	3.2	12	2.5	0.38	13
4.3	5	4.3	14	2.5	0.38	14
5.3	6	5.3	17	2.5	0.50	16
6.4	7	6.4	19	4	0.50	18
8.4	8	8.4	22	4	0.75	20
10.5	10	10.5	26	6	0.75	22
13	12	13	30	10	1.00	28
15	12	15	33	10	1.00	28
17	15	17	36	10	1.00	32
19	18	19	40	10	1.00	36
21	18	21	42	10	1.00	36
25	20	25	50	10	1.00	42
28	23	28	58	16	1.60	48
31	26	31	63	16	1.60	52
37	30	37	75	16	1.60	60
40	32	40	82	16	1.60	64
43	35	43	88	16	1.60	70
46	38	46	95	16	1.60	75
50	40	50	100	16	1.60	80

All technical data refer to the measure mm

