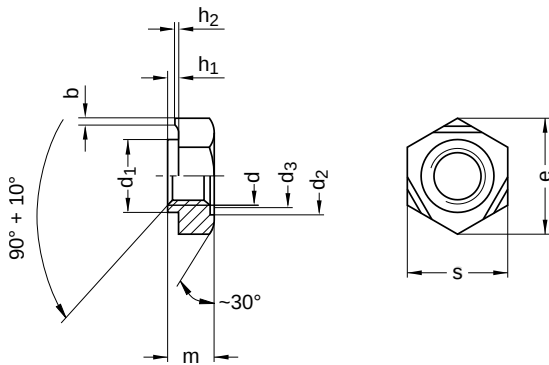


DIN 929
Hexagon weld nuts

Stainless steel A2 | Cr(VI)-free | Metric thread



Diameter (d)	nominal size	b		d ₁ nominal size	d ₂ nominal size	d ₃ min.	h ₁	
		min.	max.				min.	max.
M3	0.80	0.60	1.00	4.5	4.5	3.15	0.45	0.55
M4	0.80	0.60	1.00	6	6	4.20	0.55	0.65
M5	0.80	0.60	1.00	7	7	5.25	0.60	0.70
M6	0.90	0.68	1.12	8	8	6.30	0.60	0.75
M8	1.00	0.75	1.25	10.5	10.5	8.40	0.75	0.90
M10	1.25	0.95	1.55	12.5	12.5	10.50	0.95	1.15
M12	1.25	0.95	1.55	14.8	14.8	12.60	1.20	1.40
M16	1.50	1.10	1.90	18.8	18.8	16.80	1.60	1.80

Diameter (d)	h ₂		m nominal size	e min.	s nominal size	Pitch (P)	Tool size
	max.	min.					
M3	0.25	0.15	3.0	8.15	7.5	0.50	SW 7,5
M4	0.35	0.25	3.5	9.83	9.0	0.70	SW 9
M5	0.40	0.30	4.0	10.95	10.0	0.80	SW 10
M6	0.40	0.30	5.0	12.02	11.0	1.00	SW 11
M8	0.50	0.35	6.5	15.38	14.0	1.25	SW 14
M10	0.65	0.50	8.0	18.74	17.0	1.50	SW 17
M12	0.80	0.60	10.0	20.91	19.0	1.75	SW 19
M16	1.00	0.80	13.0	26.51	24.0	2.00	SW 24

All technical data refer to the measure mm

