

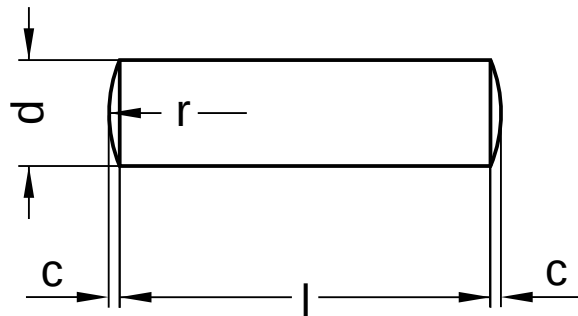
DIN 7 similar to ISO 2338

Parallel pins

With oval point | tolerance field m6

Stainless steel 1.4305 | Cr(VI)-free

Further information: DIN-standard has been withdrawn



Diameter (d)	c max.	r
1	0.15	1.0
1.5	0.23	1.6
2	0.30	2.0
2.5	0.40	2.5
3	0.45	3.0
4	0.60	4.0
5	0.75	5.0
6	0.90	6.0
8	1.20	8.0
10	1.50	10.0
12	1.80	12.0
14	2.00	16.0
16	2.50	16.0
20	3.00	20.0

All technical data refer to the measure mm



DIN 7 similar to ISO 2338

Parallel pins

With oval point | tolerance field m6

Stainless steel 1.4305 | Cr(VI)-free

Length (l) nominal size
3
4
5
6
8
10
12
14
16
18
20
24
28
30

Length (l) nominal size
32
36
40
45
50
55
60
70
80
90
100

Diameter (d)	Length (l)																										
	3	4	5	6	8	10	12	14	16	18	20	24	28	30	32	36	40	45	50	55	60	70	80	90	100		
1	●	●		●	●	●	●																				
1.5	●	●		●	●	●	●	●	●																		
2		●	●	●	●	●	●	●	●	●	●																
2.5		●	●	●	●	●	●	●	●	●	●	●	●	●	●												
3		●	●	●	●	●	●	●	●	●	●	●	●	●	●	●	●	●	●	●	●	●	●	●	●	●	●
4			●	●	●	●	●	●	●	●	●	●	●	●	●	●	●	●	●	●	●	●	●	●	●	●	●
5			●	●	●	●	●	●	●	●	●	●	●	●	●	●	●	●	●	●	●	●	●	●	●	●	●
6				●	●	●	●	●	●	●	●	●	●	●	●	●	●	●	●	●	●	●	●	●	●	●	●
8					●	●	●	●	●	●	●	●	●	●	●	●	●	●	●	●	●	●	●	●	●	●	●
10						●	●	●	●	●	●	●	●	●	●	●	●	●	●	●	●	●	●	●	●	●	●
12							●	●	●	●	●	●	●	●	●	●	●	●	●	●	●	●	●	●	●	●	●
14								●	●	●	●	●	●	●	●	●	●	●	●	●	●	●	●	●	●	●	●
16									●	●	●	●	●	●	●	●	●	●	●	●	●	●	●	●	●	●	●
20										●	●	●	●	●	●	●	●	●	●	●	●	●	●	●	●	●	●

• Combinations available in the eShop | Other sizes on request

All technical data refer to the measure mm

