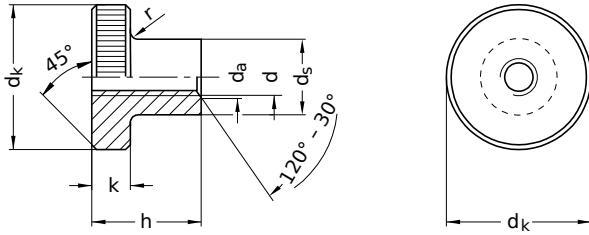


**DIN 466**  
**Knurled nuts**

High version

Brass | Cr(VI)-free | Metric thread



Diameter (d)	da		nominal size	dk		ds		h		k		r nominal size	Pitch (P)
	min.	max.		min.	max.	min.	max.	min.	max.				
M3	3	3.45	12	11.65	12.35	5.70	6	7.14	7.5	2.25	2.5	0.5	0.5
M4	4	4.60	16	15.65	16.35	7.64	8	9.14	9.5	3.20	3.5	0.5	0.7
M5	5	5.75	20	19.58	20.42	9.64	10	11.07	11.5	3.70	4.0	1	0.8
M6	6	6.75	24	23.58	24.42	11.57	12	14.57	15.0	4.70	5.0	1	1.0

All technical data refer to the measure mm

