

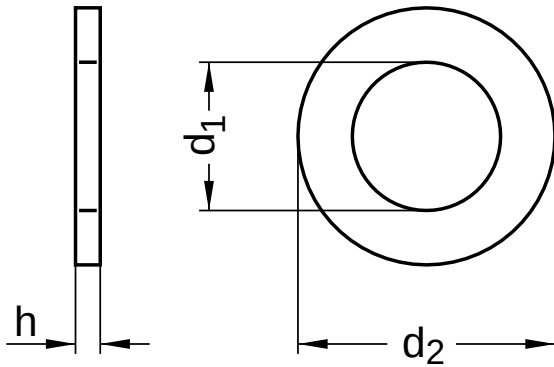
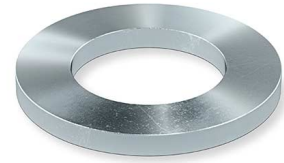
DIN 433 similar to ISO 7092

Washers

For cylinder screws

Steel 140 HV | zinc-plated | Cr(VI)-free

Further information: DIN-standard has been withdrawn



Diameter (d)	d ₁		d ₂		nominal size	h	
	min.	max.	min.	max.		min.	max.
2.2	2.2	2.34	4.20	4.5	0.3	0.25	0.35
2.7	2.7	2.84	4.70	5.0	0.5	0.45	0.55
3.2	3.2	3.38	5.70	6.0	0.5	0.45	0.55
3.7	3.7	3.88	6.64	7.0	0.5	0.45	0.55
4.3	4.3	4.48	7.64	8.0	0.5	0.45	0.55
5.3	5.3	5.48	8.64	9.0	1.0	0.90	1.10
6.4	6.4	6.62	10.57	11.0	1.6	1.40	1.80
8.4	8.4	8.62	14.57	15.0	1.6	1.40	1.80
10.5	10.5	10.77	17.57	18.0	1.6	1.40	1.80
13	13.0	13.27	19.48	20.0	2.0	1.80	2.20
15	15.0	15.27	23.48	24.0	2.5	2.30	2.70
17	17.0	17.27	27.48	28.0	2.5	2.30	2.70
19	19.0	19.33	29.48	30.0	2.5	2.30	2.70
21	21.0	21.33	33.38	34.0	3.0	2.70	3.30

All technical data refer to the measure mm

